



Sunday	Monday	Tuesday	Wednesday	Thursday	Friday	Saturday
			1 Preschool 6:30am-6PM Midweek Prayer & Reflection 12 (Noon) Choir Practice 6pm in Sanctuary	2 Preschool 6:30am-6PM	3 Preschool 6:30am-6PM	4 Preschool 6:30am-6PM
5 Holy Communion Sunday "You Are" Matthew 5:13-20 Sunday Service @ 11AM 	6 Preschool 6:30am-6PM	7 Preschool 6:30am-6PM	8 Preschool 6:30am-6PM Midweek Prayer & Reflection 12:00 (Noon) Choir Practice 6pm in Sanctuary	9 Preschool 6:30am-6PM	10 Preschool 6:30am-6PM	11 Preschool 6:30am-6PM
12 Birthdays 02/04 - Bill Schneider 02/21 - Shirley Sturgis 02/22 - Kathy Boyles 02/02 - Bill Hatcher	13 Preschool 6:30am-6PM "But I Say" Matthew 5:21-37 Sunday Service @ 11AM	14 Preschool 6:30am-6PM	15 Preschool 6:30am-6PM Midweek Prayer & Reflection 12:00 (Noon) Choir Practice 6pm in Sanctuary	16 Preschool 6:30am-6PM 9:00am - Christ Food Pantry	17 Preschool 6:30am-6PM	18 Preschool 6:30am-6PM
19 Birthdays FEBRUARY Birthdays 	20 Preschool 6:30am-6PM "Return From The Mountaintop" Matthew 17:1-9 Sunday Service @ 11AM 	21 Preschool 6:30am-6PM Shrove Tuesday Pancake Supper 6:00pm St. John's Fellowship Hall	22 Preschool 6:30am-6PM Ash Wednesday Augusta Common 9am to 4pm Midweek Prayer & Reflection 12:00 (Noon) Ash Wednesday Service 5:30pm	23 Preschool 6:30am-6PM Rooted In Faith Sconyer's 11:30am	24 Preschool 6:30am-6PM	25 Preschool 6:30am-6PM
26 Anniversaries 02/14 - Melissa & Chad Daniel Lenten Bible Study 4:00pm in Sanctuary	27 Preschool 6:30am-6PM "Finding Jesus In The Psalms" Psalms 51 Sunday Service @ 11AM	28 Preschool 6:30am-6PM	1 Preschool 6:30am-6PM Midweek Prayer & Reflection 12:00 (Noon) Choir Practice 6pm in Sanctuary	2 Preschool 6:30am-6PM	3 Preschool 6:30am-6PM	4 Preschool 6:30am-6PM



Valentine Wall: We would like each child to make a Valentine and to tell us about somebody who they love on it, for our Valentine Wall. We will need to receive them by Friday, February 10th.



Winter Specials Schedule:

- Music - Monday Mornings
- Soccer Shots - Tuesday Mornings
- Movement - Wednesday Mornings
- Pre-K Computer - Thursday & Friday Mornings

SAFETY ISSUES: Please when entering and exiting the building, **DO NOT ALLOW** other people to enter or exit the building unless a staff member is present.

Need: We are in need of clean, plastic grocery bags for the Food Pantry and the Center.

Seasonal Clothing: We are asking that parents please make sure that all children have a weather-appropriate change of clothing that is properly labeled with the child's name.

Please also make sure that your children have enough diapers and wipes each week!

Spring Break!

If your child needs Camp Care during Spring Break, please make sure you notify the office of the days that you will need! Thank you for your cooperation!

Save The Date!

Valentine's Class Parties - February 14th -

Look for Info from your teacher to be sent home

Scholastic Bookfair - March 20th - March 24th - More Info To Come

March 24th - 5:30-7:30pm - Classroom Easter Activities

(Schedule To Come At A Later Date) - Appearance By The Easter Bunny -

Carryout Pizza Dinner - Last Shopping Day For Scholastic Bookfair

IMPORTANT DATES:

Friday - April 7th - Woodlawn Preschool will be **CLOSED** in observance of Good Friday. The center will reopen on Monday, April 10th

Monday - May 29th - Woodlawn Preschool will be **CLOSED** in observance of Memorial Day.

The center will reopen on Tuesday, May 30th

Please feel free to contact the office during normal business hours at

(706) 738 - 2546

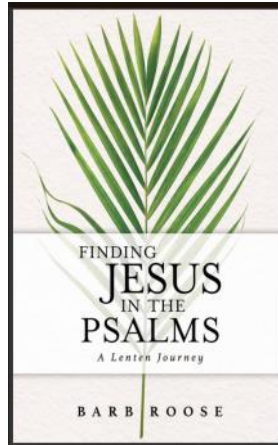
You can also email us after hours at the emails below:

woodlawnaugustaumc@gmail.com or cuppe4567@gmail.com

Lenten Bible Study Beginning Sunday, February 26th @ 4:00pm

A meaningful encounter with Jesus and the Psalms through the season of Lent with Barb Roose.

Barb Roose guides the reader through a meaningful encounter with the Psalms through the season of Lent. Combining an interpretation of the psalms with real life stories, the study moves through the familiar words of Psalm 23 toward the painful cries of Psalm 22 uttered by Jesus on the cross. The study includes reflections on the life of King David and the original context of the writings, along with connections between the psalms and the life and death of Jesus the Messiah.



"The Psalms provide a perfect framework for experiencing Lent through the verses that were Jesus's own scriptures, offering both him and us strength and wisdom in a painful and redemptive season. The Book of Psalms hums with the heartbeat of our humanity with divinely inspired words that find purchase in the tenderest places in our hearts when our human words or wisdom fails us." Barb Roose

The study will run every Sunday beginning February 26th - Palm Sunday, April 2nd @ Woodlawn UMC - 4pm

Study Books are \$12

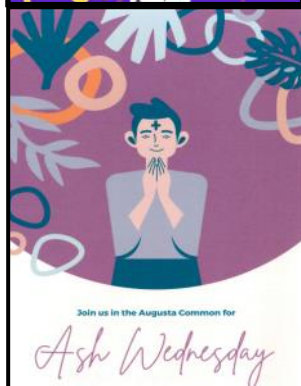
Please sign up with Woodlawn by **MONDAY, FEBRUARY 13th**



We are invited to St. John UMC on Tuesday, February 21st, for their annual Shrove Tuesday Pancake Supper!

When: 6:00pm
Where: St. John's UMC Fellowship Hall
Cost: \$5 Adults, \$3 Kids (3-12), Under 3 Free
Have your jokes ready for our annual joke contest!

Sign Up In Woodlawn's Café By Thursday, February 16th



Area Clergy will be in the Augusta Common, 836 Reynolds Street, Ash Wednesday and for The Imposition of Ashes on February 22nd, from 9:00am - 4:00pm



We will have our Ash Wednesday Service on February 22nd @ 5:30pm in our sanctuary.

THE TIDINGS

Woodlawn United Methodist

Established 1889

"Color Us Purple"

The love at the heart of the Christian faith has many shades, but none of them are inclusive of domination and violence. Even as the misuse of religion throughout the world's history and unto this day is obvious, the way of love as seen in Jesus is the way of true liberation. As Christians who mark the beginning of the season of Lent this month, let us remember that Jesus' death and passion are not at the hands of an abusive Father/Creator God, but are reflective of God's giving up of his own heart for the loveless and the unloved.

The theologian Jurgen Moltmann reminds us, "by the cross of Golgotha, God's being and God's life is open to we the human." So to love as Christ loves is never about diminishing another but liberating and elevating the other. The power of this love is the power of new life. To embrace domination and brutality is to dishonor that love and sicken the soul.

Lent, the forty days prior to Easter has historically presented the believer with a season of reflection and self discovery in the context of Jesus's journey to the cross. Lent from an olde English word meaning "spring" corresponds to the forty days of Jesus' trials and temptations in the desert prior to the beginning of his ministry.

Traditionally the season is marked by devotion and fasting. Perhaps the best fast for many of us is a fast from all depictions of brutality and violence. To turn away from viewing violence is not to deny its reality but to deny its power to shape the way we see others and the world. Not coincidentally these forty days have their own palette: The grey of winter gradually gives way to the profusion of spring's brilliant hues. While we wait in the mean time, purple and its many shades might best color our point of view. You see the color purple has traditionally been associated with mourning and royalty. And it was the color that the Romans dressed Jesus in with their attempt to mock and humiliate him. But, it certainly makes for a better statement than grey.



Grace and Peace,
Pastor Sonny Mason



Prayer Group will not be meeting until further notice. The Prayer List will be sent out weekly via email to inform everyone of the Prayer Requests. If you have any prayer requests, please contact Pastor Sonny at bernardsmason@aol.com

Pastor

Bernard "Sonny" Mason

Preschool Director
Elaine Cupp

Senior Ministries
Joan Satcher

Family Ministries
Debbie Hixon

Director Of Music
Phillip Streetman

Financial
Larry Wiggins

Church Office:

706-738-2546

woodlawnaugustaumc@gmail.com

Administrative Assistant
Jeremy Froebel



CHECK OUT OUR WEBSITE!!

But you must return to your God; maintain love and justice, and wait for your God always.

- Hosea 12:6